

Counter made of of x5 central modules and x2 end modules (paired) all bolted together in works and dismantled in preparation for final site fixing.

All modules manufactured from 18mm MDF (25mm MDF top/6mm Flexi Plywood ends). Finishes:

All external faces Laminated Egger H3303 Oak with matching Oak lipings to match to front facing edges with PU edgings to staff side.

Work top with inset Corian Top ref: White Pebble E3-236

Shelving back panels painted Matt black RAL 9005

All internal faces laminated Matt White with matching PU edging.

Drawers formed from 12mm MDF and fitted on 400mm ball bearing runners (Art. no. 432 23 940), top drawer fitted with Hafele wendertilt insert (Art. no. 550 27 402) - All drawers fitted with Hafele 100mm deep, 100mm high, 103 mm, Height 56 mm, Vienna Matt Chrome Art. no. 151 35 208

Cupboard doors hang on soft close kitchen type hinges and fitted with Hafele inset handles as the drawers

20L pull out bin insert by Hafele (Art. no. 502 43 300)

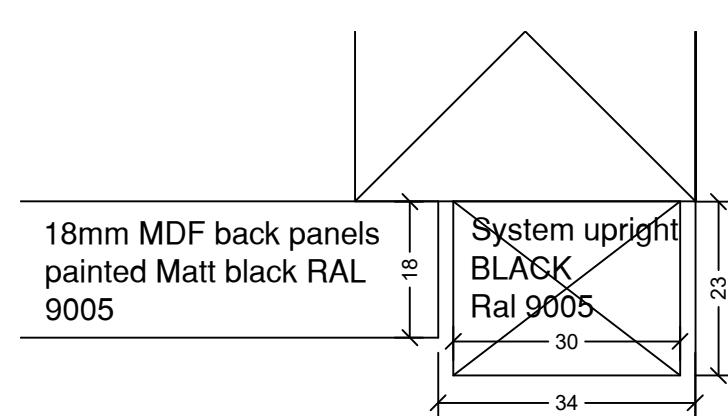
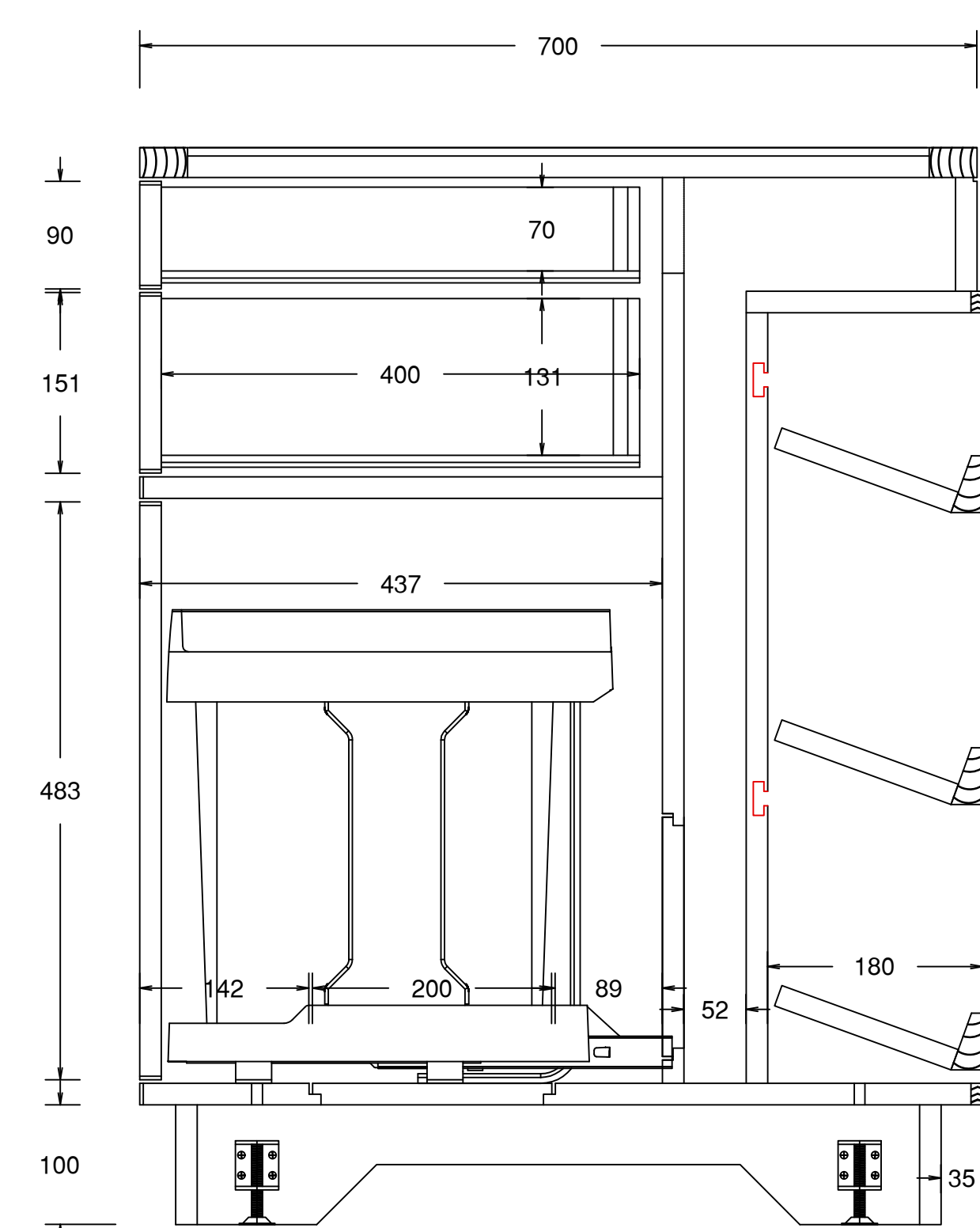
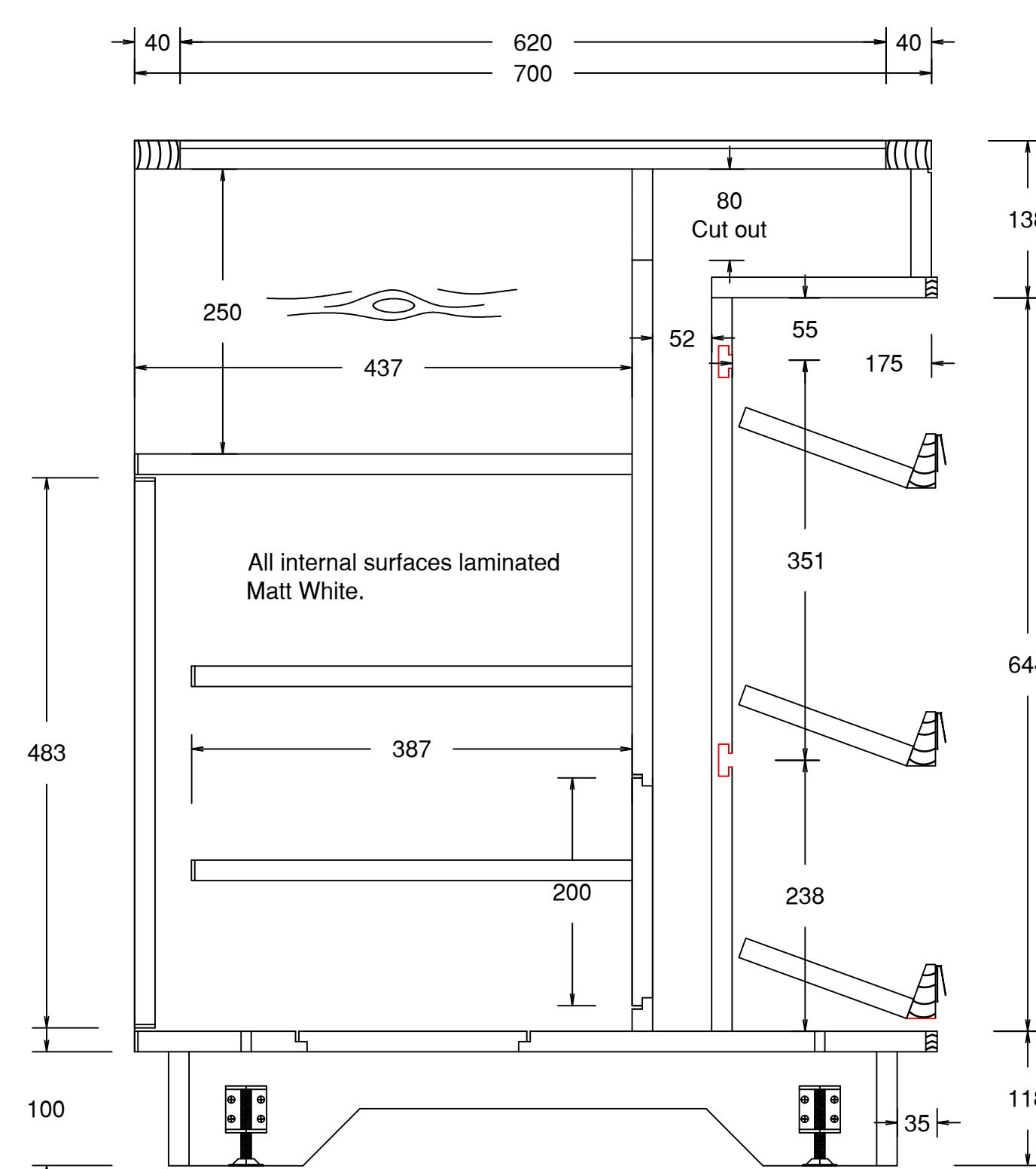
Supply with x8 Magazine holders for end display Ref. A4 – BPSC2C20 236mm Wide x 285mm High x 120mm Deep

Supply with x14 200mm Euro hooks

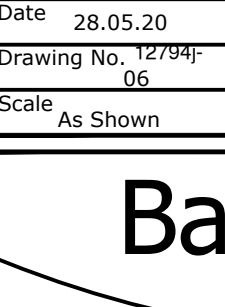
Supply with x15 half width shelves

Supply with x15 full width shelves

System uprights and associated shelving brackets powder coated BLACK



Visual

| | |
|--|------------------------------------|
| Revisions | |
| Reference | Date |
| | |
| | |
| <p>This drawing is the property of Barnwood Shopfitting Limited. At all times it must not be copied or passed to a third party without written consent.</p> <p>Figured dimensions to be read in preference to scaled</p> | |
| Status | Construction |
| Client | <u>Holland & Barret</u> |
| Contract | Chelmsford |
| Drawing Title Proposed Service Hub Counter details | |
| Date 28.05.20 | Cad Ref. 510000 |
| Drawing No. 12/196 | Revision |
| Scale 1:50 | Drawn By JY |
| As Shown | |
|  | |
| 203 Barnwood Rd Barnwood Gloucester, GL4 3HS Email: mail@barnwoodshopfitting.com Web: www.barnwoodshopfitting.com | |
| Phone: (01452) 614124 Fax: (01452) 372923 | |